

The Season

Words and Music by Trevor Hopkins
Arranged by Sharon Hopkins

Joyfully ♩ = 100

Piano

8vb

f

The piano introduction consists of four measures in 4/4 time. The right hand plays a series of chords, and the left hand plays a bass line. The tempo is marked 'Joyfully' with a quarter note equal to 100 beats per minute. The key signature has two sharps (F# and C#).

5

mf

It's the sea - son of snow - fall It's the sea - son of love ____
It's the sea - son of Wise - men Who came from a - far ____

The vocal line begins at measure 5. The melody is in 4/4 time. The lyrics are: "It's the sea - son of snow - fall It's the sea - son of love ____
It's the sea - son of Wise - men Who came from a - far ____"

Pno.

mf

The piano accompaniment for the first vocal line. It features a steady accompaniment with chords in the right hand and bass notes in the left hand. The dynamic is marked *mf*.

9

It's the sea - son of laugh - ter ____ for - re - mem - ber - ing Him ____ a - bove ____
In search of the great - est King ____ The new ____ and bright - est Star ____

The vocal line continues at measure 9. The lyrics are: "It's the sea - son of laugh - ter ____ for - re - mem - ber - ing Him ____ a - bove ____
In search of the great - est King ____ The new ____ and bright - est Star ____"

Pno.

The piano accompaniment for the second vocal line. It continues with the same accompaniment pattern as the first line.

13

It's the sea - son of good - ness
It's the sea - son of Shep - herds

It's the sea - son to give _____
To see Ang - els on _____ high

13

Pno.

17

It's the sea - son of spend ing time with fam - i - ly _____ and friends _____
To leave _____ all their Pre - e - cious things to kneel _____ by _____ His side

17

Pno.

21

Can we keep this feel - ing al - ways _____ here _____

21

Pno.

25

Shar-ing the spir - it _____ of the sea - son all ___ year ___

Pno.

Piano accompaniment for measures 25-28, featuring a steady eighth-note accompaniment in the right hand and a bass line in the left hand.

29

For those who need ___ us will ___ we be ___ there 'cause He'll

Pno.

Piano accompaniment for measures 29-32, continuing the eighth-note accompaniment in the right hand and bass line in the left hand.

33

be there _____ l.h. *mp* It's the sea - son of know - ing

Pno.

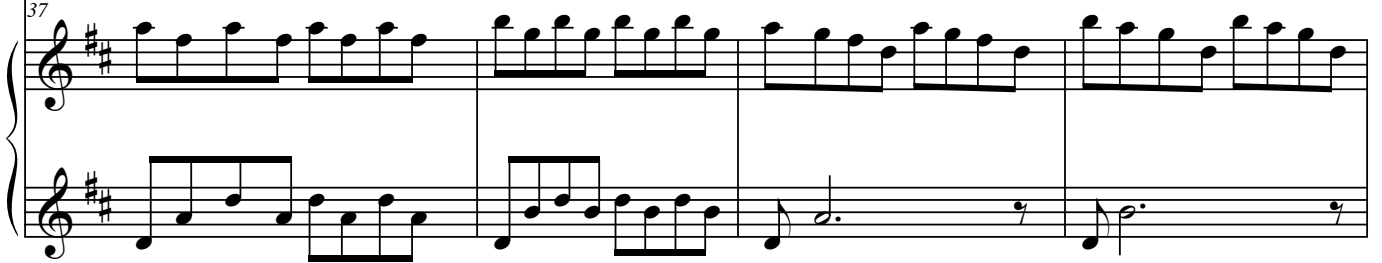
Piano accompaniment for measures 33-36, including a *mp* dynamic marking and a *slower* tempo instruction. The right hand features a steady eighth-note accompaniment, and the left hand has a bass line.

37



Have I done all I can _____ To feed His sheep to be _____ His star to

Pno.

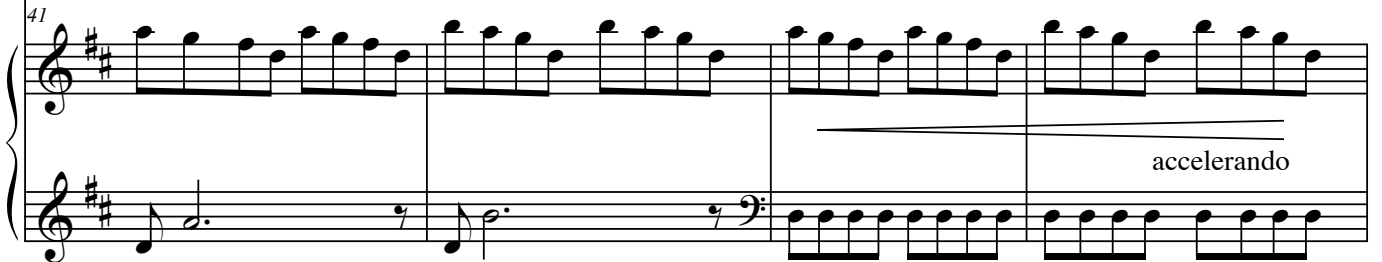


41



be with Him _____ The Son of Man _____ The Son of Man

Pno.

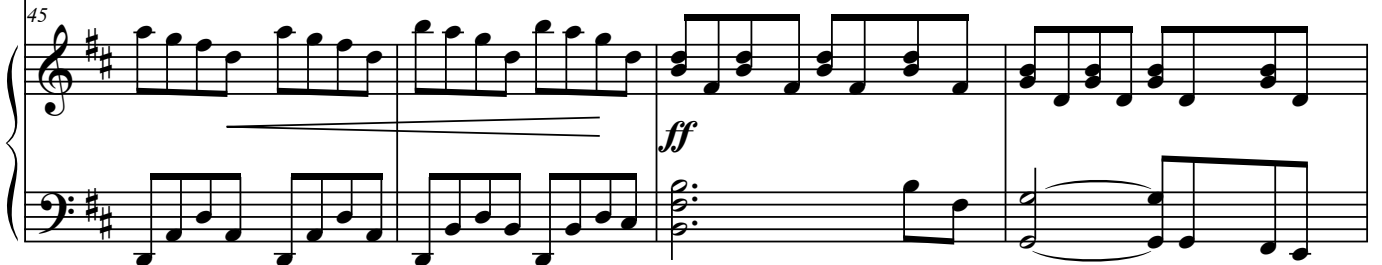


45



ff Can we keep this feel - ing al - ways _____ here _____

Pno.

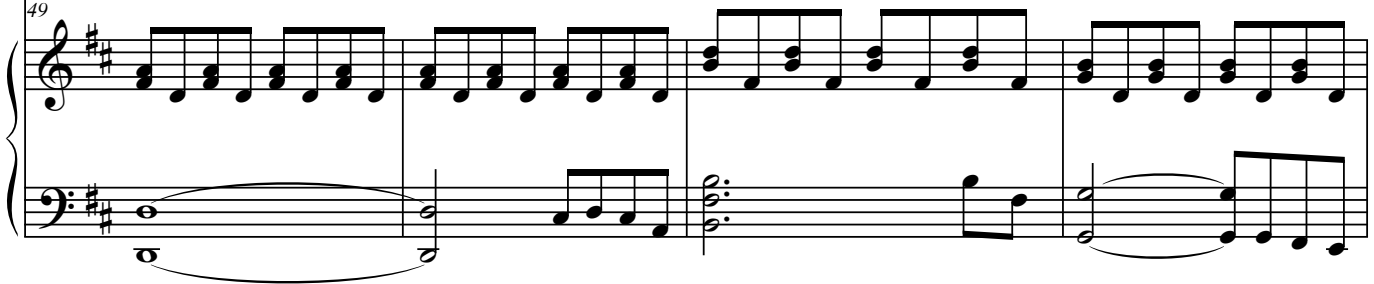


49



Shar-ing the spir - it _____ of the

Pno.

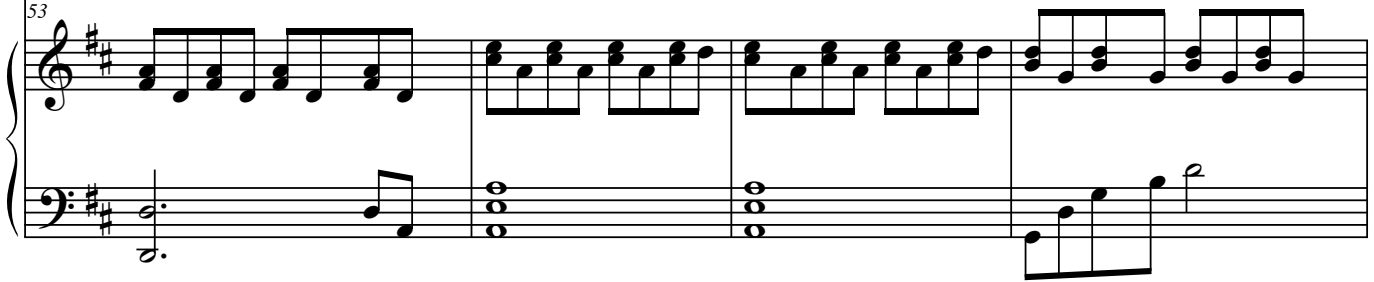


53



sea - son all ___ year _____ For those who need _

Pno.

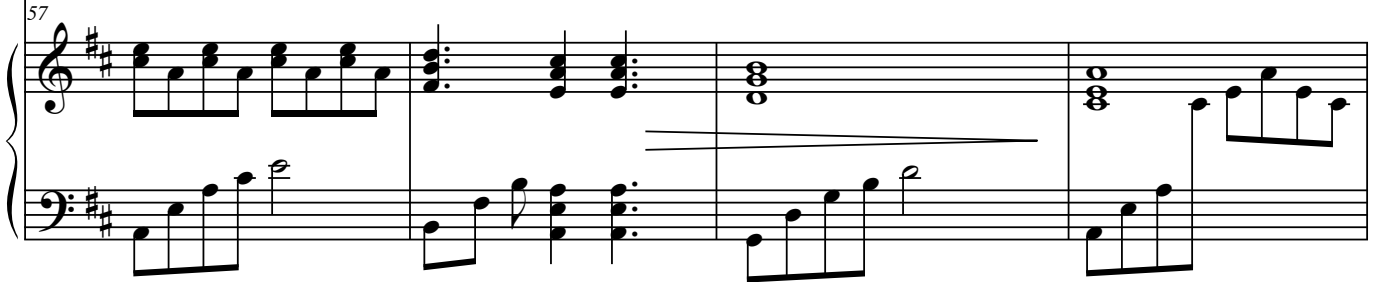


57



___ us will ___ we be ___ there 'cause He'll be there _____

Pno.



61

Pno.

8vb

ff

65

Pno.

8vb

molto rit.